

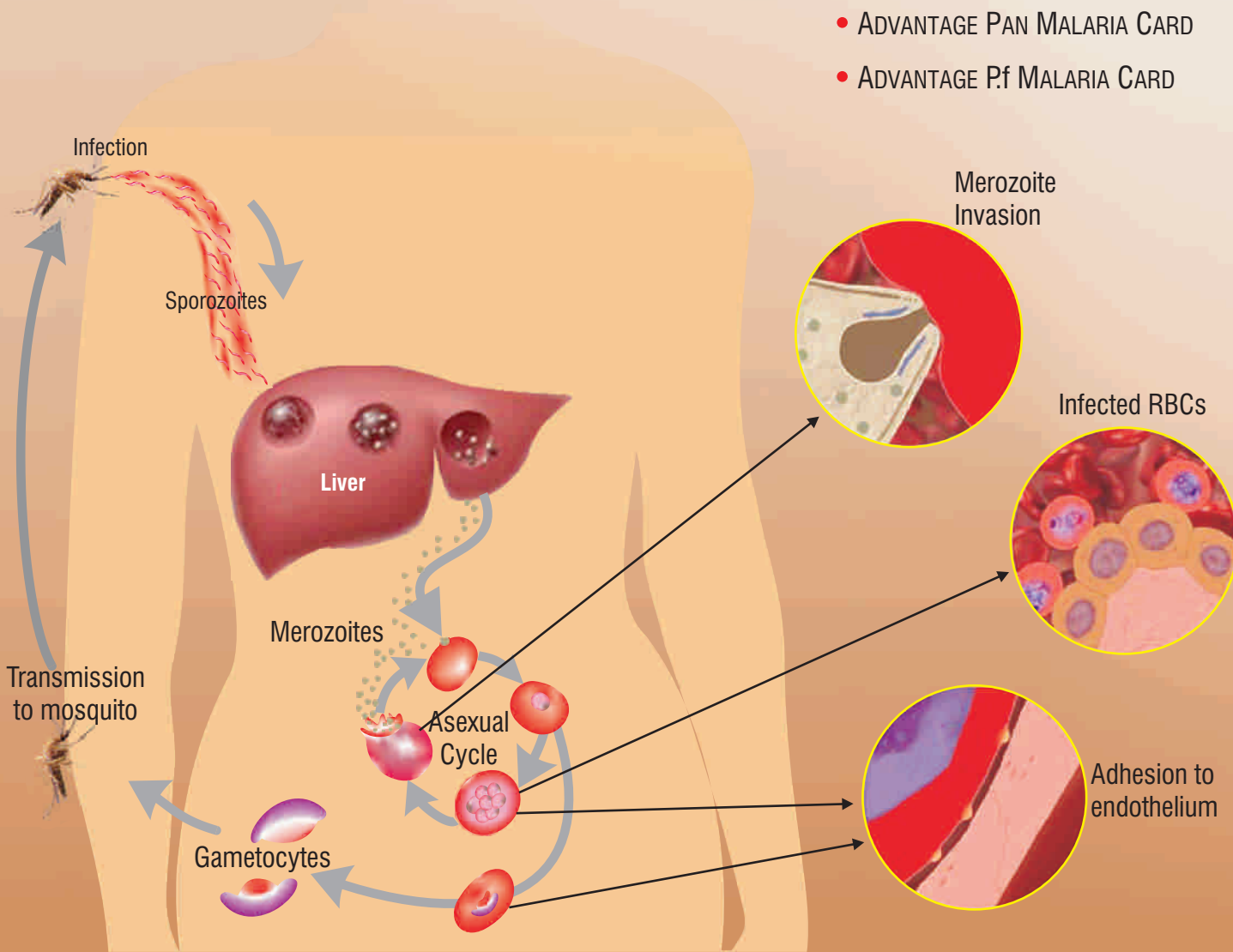
MALARIA

re-emerging as world No.1 infectious Killer

Malaria is the most common infectious tropical disease and an enormous public health problem. It is caused by the parasite called plasmodium and passed to human by mosquito (female anopheles). It is a disease that can be treated in just 2 days, yet it can cause fatal complication if the **diagnosis is delayed**.

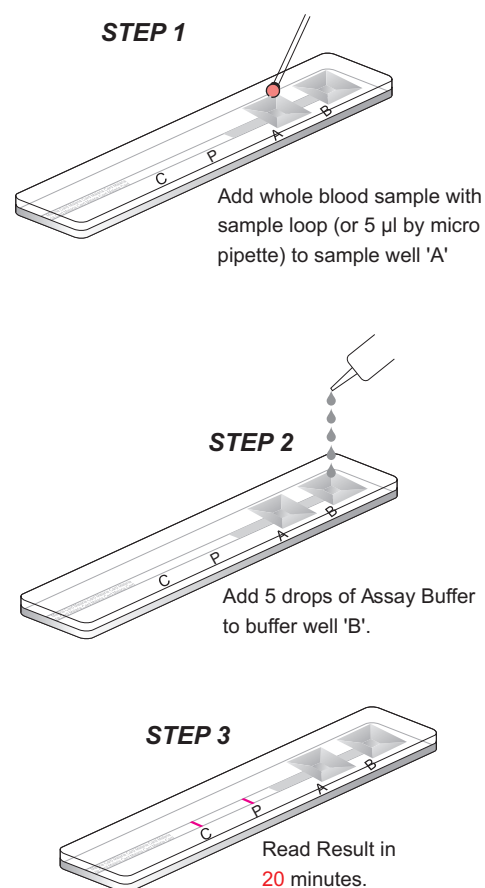
ANTIGEN TEST MADE MALARIAL DETECTION JUST EASY...

- ADVANTAGE MAL CARD
- ADVANTAGE MALARIA CARD
- ADVANTAGE PAN MALARIA CARD
- ADVANTAGE Pf MALARIA CARD



Combining Reliability with Convenience through Rapid Antigen Test...

TEST PROCEDURE



SALIENT FEATURES

- ✔ Complete Range of Malaria Antigen Test (pLDH & HRP-2)
- ✔ Individually pouched Single Tests - Practical & Safe
- ✔ Sensitivity of 50-200 parasite per μ l blood
- ✔ See through Device
- ✔ Longer Shelf Life 24 months at 4-30°C
- ✔ Easy to Interpret Colour Bands
- ✔ Result within 20 minutes

*ADVANTAGE OF ANTIGEN OVER ANTIBODY

1. **Limited value for treatment** : Presence of specific antibody only reflects past infection, so positive test cannot differentiate present or past infection.
2. **Non-practical for acute Malaria** : Antibodies develop in the later stages of infection, cannot be used for acute malaria detection.
3. **Non-specific** : Malarial parasite produce specific antibodies against plasmodia and non-specific antibody against leucocyte, RBCs, Rhumatiod factor etc. which may cause false positive results.

*FACTS FOR ANTIGEN BASED RAPID TEST

1. **Best Alternative** : Rapid test based on antigen for Malaria offer a valid tool to microscopy
2. **Help to fight global threat** : Rapid test based on antigen provide early and precise detection.
3. **Monitoring of treatment** : Test become negative after successful treatment
4. **Easy to perform** : No skill operator or expert required to perform the test
5. **No false positivity** : Antigen are not present in host circulation in cases of dead parasite.
6. **Economic & Trouble free** : No additional equipment is required like microscope.
- *7. RDTs based on HRP-2 and pLDH have greater sensitivity than aldolase in detection of P. falciparum infection in most environment condition.
- *8. RDTs based on pLDH are more sensitive than aldolase in detection of PAN specific infection.
- *9. RDTs based on aldolase are likely to be less temperature stable than pLDH and HRP-2 and will therefore loose sensitivity more rapidly in uncontrolled storage.

*Source : http://www.wpro.who.int/RDT/docs/Developing_and_testing_an_RDT_Job_Aid.pdf

ADVANTAGE MAL CARD



Rapid Visual Antigen based Test for Detecting Infection with P. falciparum & Plasmodium Species (P. falciparum/ P. vivax/ P. malariae/ P. ovale) based on pLDH antigen Malaria Parasite in Whole Blood

ADVANTAGE MALARIA CARD



Rapid Visual Antigen based Test for Detecting Infection with P. falciparum (HRP-2) & P. vivax (pLDH) Malaria Parasite in human Whole Blood

ADVANTAGE PAN MALARIA CARD



Rapid Visual antigen based test for detecting infection with Plasmodium Species (P. falciparum/ P. vivax/ P. malariae/P. ovale) based on pLDH antigen Malaria Parasite in Whole Blood

ADVANTAGE Pf MALARIA CARD



Rapid Visual Antigen based test for detecting infection with P. falciparum (HRP-2) Malaria Parasite in Human Whole Blood

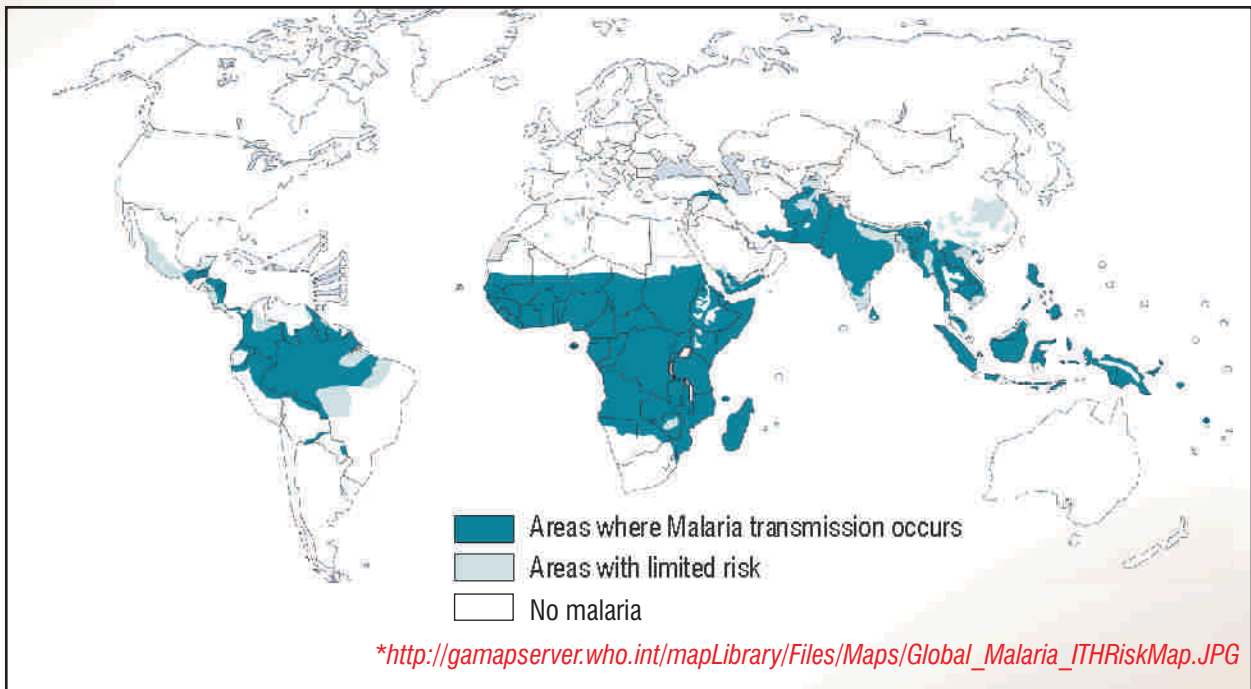
*Facts : At a Glance

- More than 41% of world population at risk of acquiring malaria and proportion increases yearly.
- Malaria affects more than 2400 million people, over 40% of the world population, in more than 100 countries in the tropics from South America to the Indian Peninsula.
- Malaria kills in 1 year what AIDS killed in 15 years. In 15 years, if 5 million have died of AIDS, 50 million of died have malaria.
- Its accounts 2.6% of the total disease burden of the world.
- 300-500 million clinical cases of malaria are reported each year world wide.
- About 1.5 to 3 million people die of malaria every year.
- 71% of all death from malaria are children under 5 years.
- Malaria kills a child every 30 seconds.

Source : www.theglobalfund.org/en/in_action/events/africamalariaday/2004/malaria/

Source : www.malariasite.com/malaria/whatis malaria.htm

*Global Distribution of Malaria 2009



ADVANTAGE PAN MALARIA CARD

	Sensitivity	Specificity
200 Parasites	100%* (P.v.)	—
2000 Parasites	100%*	—
Negative Samples	—	98.21%*

*Reference : Malaria Rapid Diagnostic Performance: Results of WHO products testing of malaria RDTs (2008), Page: 17

*<http://apps.who.int/tdr/svc/publications/tdr-research-publications/rdt-performance>

ADVANTAGE MAL CARD

	Sensitivity	Specificity
200 Parasites	100%* (P.v.)	—
2000 Parasites	100%*	—
Negative Samples	—	95.83%*

*Reference : Malaria Rapid Diagnostic Performance: Results of WHO products testing of malaria RDTs (2008), Page: 17

ADVANTAGE P.f MALARIA CARD

	Sensitivity	Specificity
200 Parasites	97.47%*	—
2000 Parasites	100%*	—
Negative Samples	—	100%*

*Reference : Malaria Rapid Diagnostic Performance: Results of WHO products testing of malaria RDTs (2008), Page: 16

This information on evaluation is provided for Scientific Community Enquiring for an independent evaluation other than company's in house evaluation. It is not for Commercial or promotional purpose.

For further information, please contact:

J. Mitra & Co. Pvt. Ltd.

A-180-181, Okhla Industrial Area, Phase-1, New Delhi - 110 020 - INDIA
 Phone : +91-11-47130300, 500, 26818971-73 Fax : +91-11-26818970, 26810945
 E-mail : jmitra@jmitra.co.in Internet : www.jmitra.co.in