

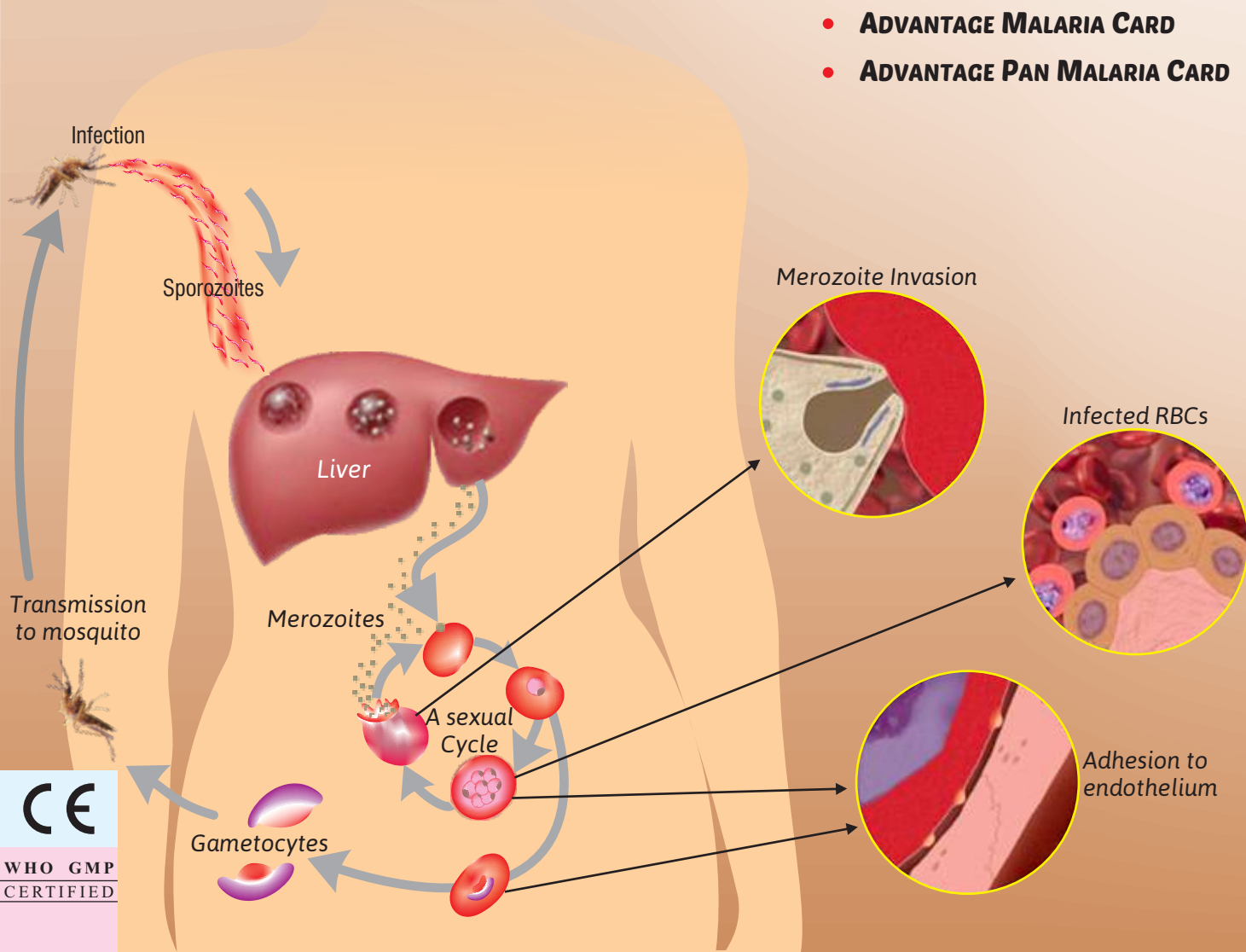
# MALARIA

*re-emerging as world No.1 infectious Killer*

Malaria is the most common infectious tropical disease and an enormous public health problem. It is caused by the parasite called plasmodium and is passed to human by mosquito (female anopheles). It is a disease that can be treated in just 2 days, yet it can cause fatal complication if the **diagnosis is delayed**.

## ANTIGEN TEST MADE MALARIAL DETECTION JUST EARLY, EASY & ACCURATE.....

- **ADVANTAGE MAL CARD**
- **ADVANTAGE MALARIA PAN+Pf CARD**
- **ADVANTAGE Pf MALARIA CARD**
- **ADVANTAGE MALARIA CARD**
- **ADVANTAGE PAN MALARIA CARD**

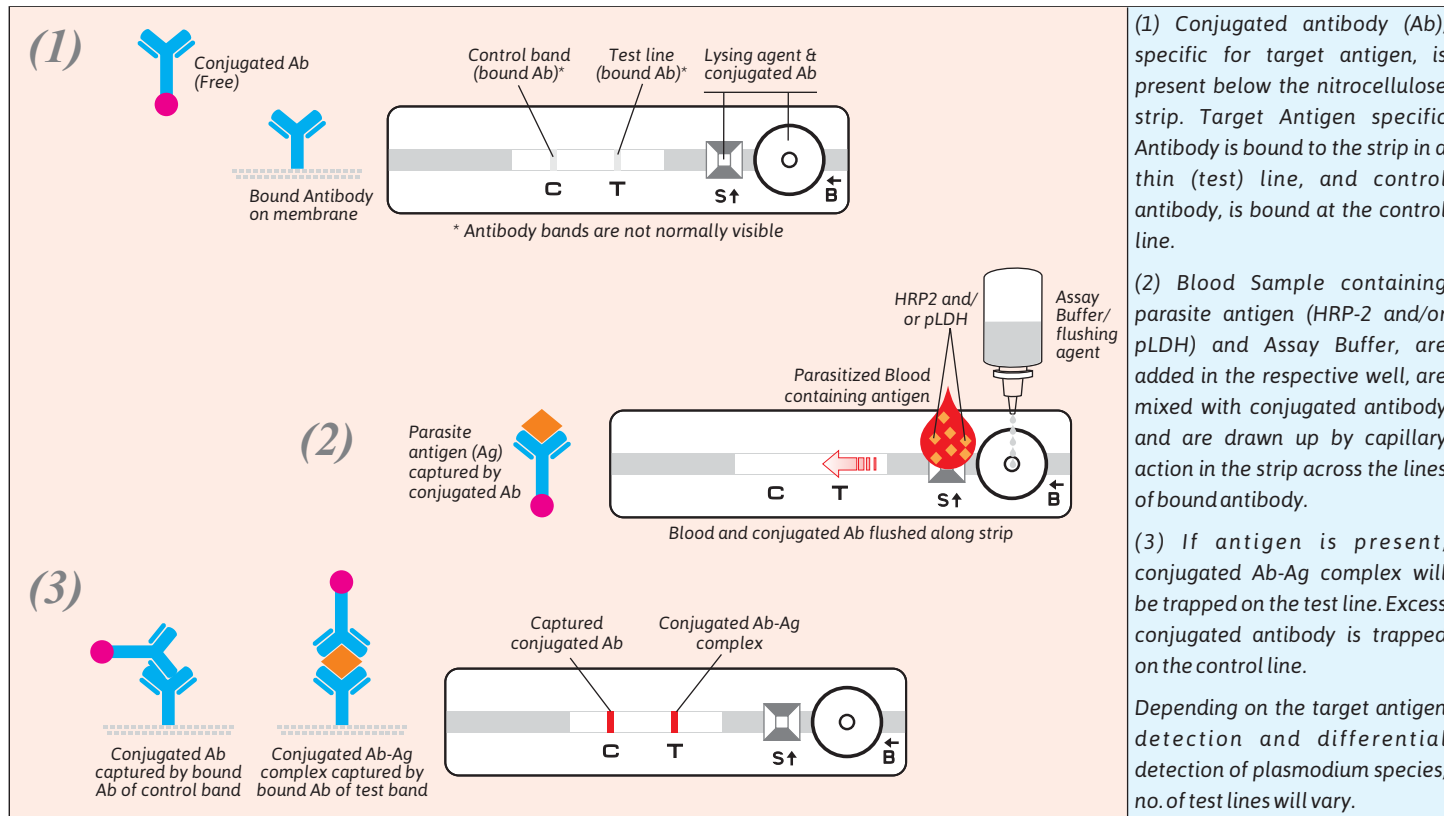


CE

WHO GMP  
CERTIFIED

# Combining Reliability with Convenience through Rapid Antigen Test...

## Lets know about J. Mitra Malaria principle.....



## PLASMODIUM SPECIES DETECTION BY DIFFERENT TEST

Product Name	Test Line	PAN	P.v	Pf	
				HRP-2	pLDH
Advantage Mal Card		✓	—	—	✓
Advantage Malaria Pan+Pf Card		✓	—	✓	—
Advantage Pf Malaria Card		—	—	✓	—
Advantage Malaria Card		—	✓	✓	—
Advantage Pan Malaria Card		✓	—	—	—

## Advantage MAL CARD

For detection of *P. falciparum* - pLDH & Plasmodium Species (*P. falciparum*/*P. vivax*/*P. malariae*/*P. ovale* - pLDH) in Human Whole Blood



Sensitivity: 100% Specificity: 99.77%  
In-house evaluation

- Individually pouched Single Tests - Practical & Safe
- Analytical Sensitivity of 100-200 parasite per  $\mu$ l blood
- See through Device
- Longer Shelf Life 24 months at 4-30°C
- Easy to Interpret Colour Bands
- Result within 20 minutes
- Convenient Pack size: 25 Tests & 50 Tests
- Sensitivity: 100%\* Specificity: 95.83%\*

\*As per WHO, Geneva evaluation

## Advantage Malaria PAN + Pf CARD

For detection of *P. falciparum* - HRP-2 & Plasmodium Species (*P. falciparum*/*P. vivax*/*P. malariae*/*P. ovale* - pLDH) in Human Whole Blood



Sensitivity: 100% Specificity: 99.8%  
In-house evaluation

- Individually pouched Single Tests - Practical & Safe
- Analytical Sensitivity of 50-100 parasite per  $\mu$ l blood
- See through Device
- Longer Shelf Life 24 months at 4-30°C
- Easy to Interpret Colour Bands
- Result within 20 minutes
- Convenient Pack size: 25 Tests & 50 Tests

## Advantage P.f MALARIA CARD

For detection of *P. falciparum* - HRP-2 in Human Whole Blood



Sensitivity: 100% Specificity: 99.80%  
In-house evaluation

- Individually pouched Single Tests - Practical & Safe
- Analytical Sensitivity of 50 parasite per  $\mu$ l blood
- See through Device
- Longer Shelf Life 24 months at 4-30°C
- Easy to Interpret Colour Bands
- Result within 20 minutes
- Convenient Pack size: 25 Tests
- Sensitivity: 100%\* Specificity: 100%\*

\*As per WHO, Geneva evaluation

## Advantage MALARIA CARD

For detection of *P. falciparum* - HRP-2 & Plasmodium Species (*P. vivax* - pLDH) in Human Whole Blood



Sensitivity: 100% Specificity: 99.77%  
In-house evaluation

- Individually pouched Single Tests - Practical & Safe
- Analytical Sensitivity of 50-200 parasite per  $\mu$ l blood
- See through Device
- Longer Shelf Life 24 months at 4-30°C
- Easy to Interpret Colour Bands
- Result within 20 minutes
- Convenient Pack size: 25 Tests

## Advantage PAN MALARIA CARD

For detection of Plasmodium Species (*P. falciparum*/*P. vivax*/*P. malariae*/*P. ovale* - pLDH) in Human Whole Blood

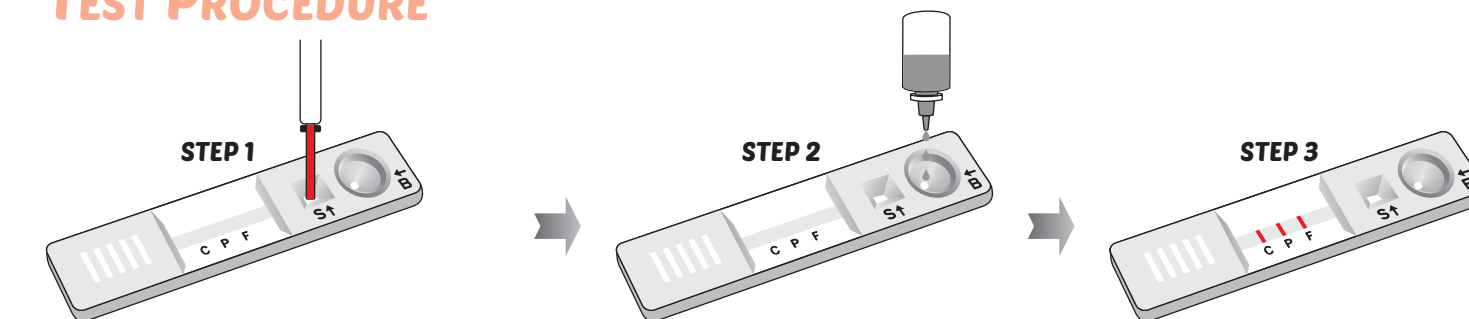


Sensitivity: 100% Specificity: 99.8%  
In-house evaluation

- Individually pouched Single Tests - Practical & Safe
- Analytical Sensitivity of 100 parasite per  $\mu$ l blood
- See through Device
- Longer Shelf Life 24 months at 4-30°C
- Easy to Interpret Colour Bands
- Result within 20 minutes
- Convenient Pack size: 25 Tests & 100 Tests
- Sensitivity: 100%\* Specificity: 98.21%\*

\*As per WHO, Geneva evaluation

## TEST PROCEDURE



Add 4  $\mu$ l of the anti-coagulated blood sample using sample dropper or micropipette (or finger prick sample) to the sample well 'S'. Make sure that the blood from the sample dropper has been completely transferred to the sample pad.

Add 3 drops of Assay Buffer to buffer well 'B' and allow the reaction to occur for 20 minutes.

Read Result in 20 minutes.

**Important Note:** Discard the DEVICE immediately after reading results as it is potentially infectious.



# \*Products Performance as per WHO, Geneva and FIND, Geneva

in 2006, WHO, Geneva and FIND (Foundation for Innovative New Diagnostics), Geneva launched an evaluation program to assess the performance of commercially available malaria RDTs and their results are:

Figure 9: Phase 2 *P. vivax* detection rate of malaria RDTs at low (200) and high (2000 or 5000) parasite densities (parasites/  $\mu$ l) according to target antigen type (aldolase, pLDH, aldolase + pLDH)

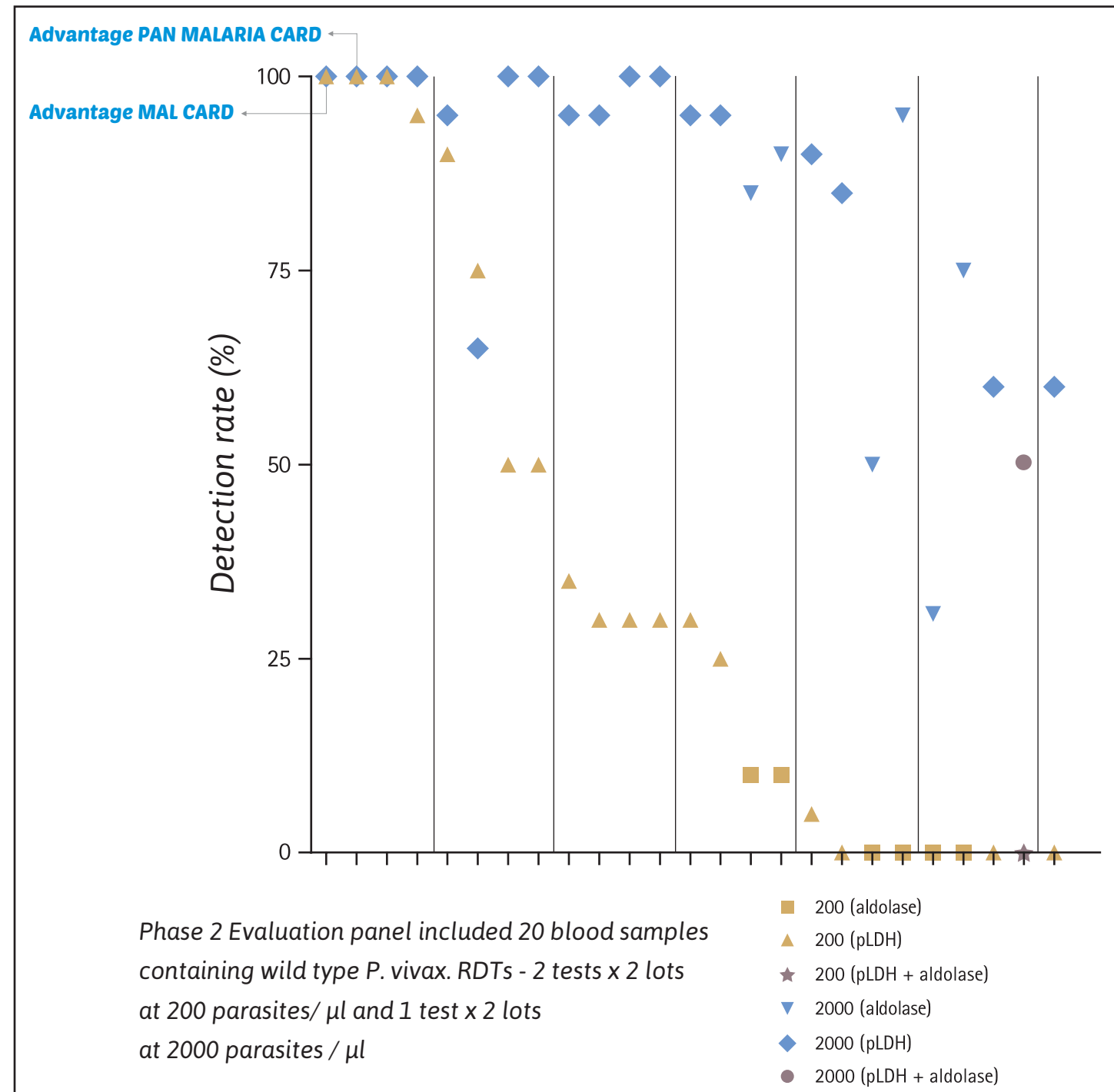
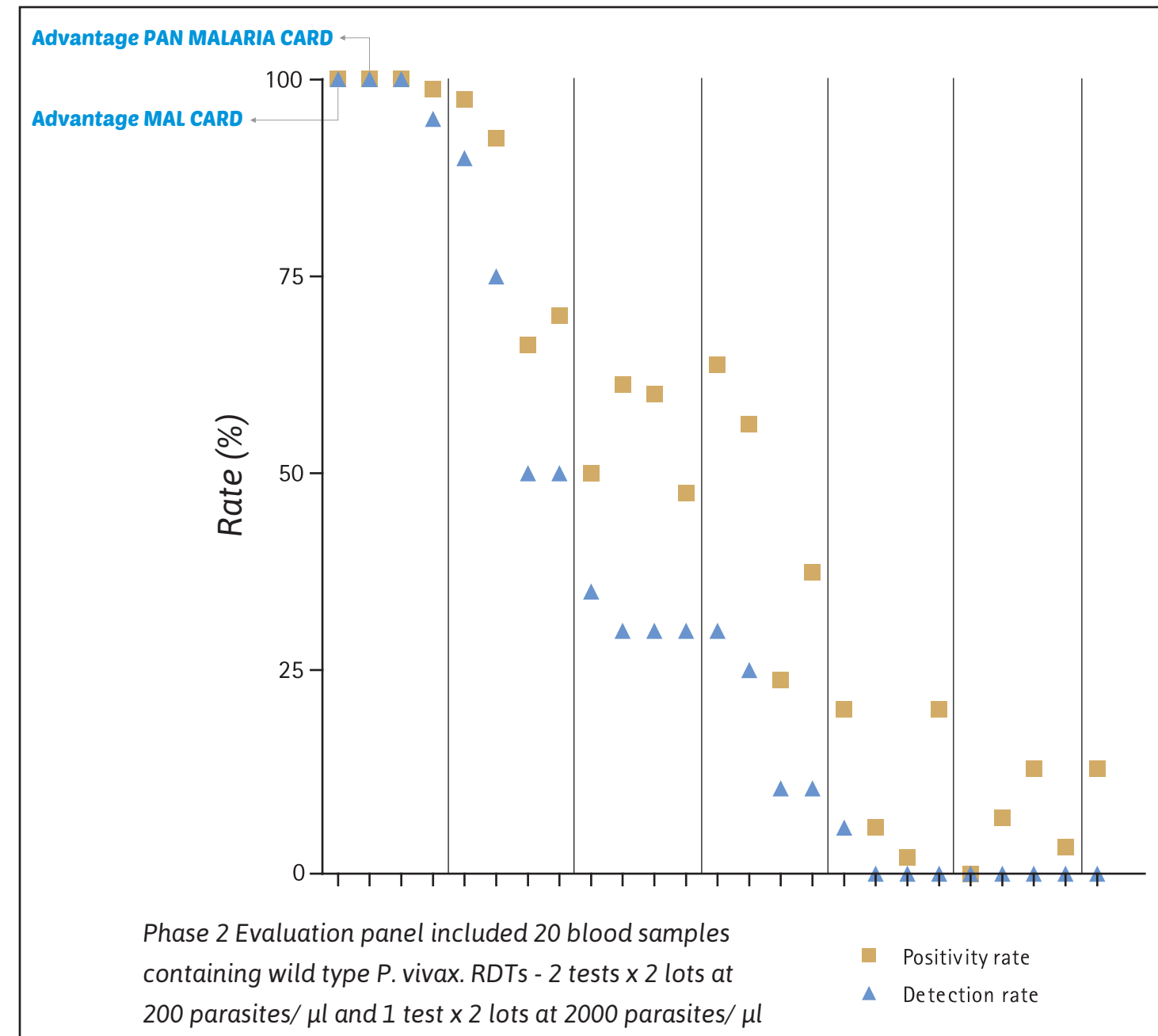


Figure 11: Phase 2 wild type *P. vivax* detection rate and positivity rate at 200 parasites/  $\mu$ l



Malaria Rapid Diagnostic Test Performance, Results of WHO product testing of malaria RDTs: Round 1 (2008), Page No.: 24  
 Website: [http://www.wpro.who.int/malaria/internet/resources.ashx/RDT/docs/pdf\\_version/OMS-FIND-RapportMalaria200900514v25.pdf](http://www.wpro.who.int/malaria/internet/resources.ashx/RDT/docs/pdf_version/OMS-FIND-RapportMalaria200900514v25.pdf)

\* Note : The above information is provided for the scientific community, It is not for commercial or promotional purpose.