

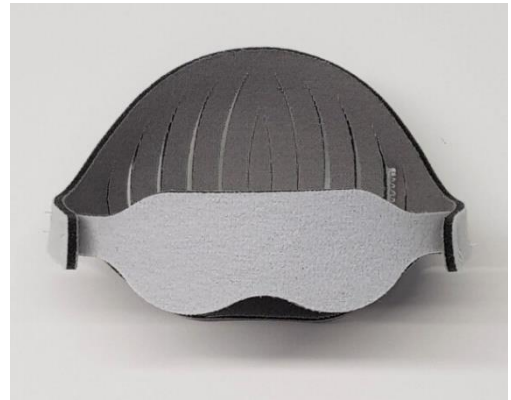
Eye Protector With Rear Support

Nursing Care – Paediatric Product

INTENDED USE

The **Eye Protector with Rear Support** is a medical device which is intended to be used as paediatric eye protector for phototherapy.

It has been designed following an anatomical model in order to assure the correct position of the protector against sudden movements.



COMPOSITION

Product with a three-layer material: cotton inner layer, outer polyamide layer and polyurethane foam filling.

INSTRUCTIONS FOR USE

- Place the Protector around patient's eyes, around the head.
- Hold the Protector by means of the velcro system.

PRODUCT CHARACTERISTICS

Product lengths are adjustable by means of the combination of the velcro system and the material of the outer layer.

The product is breathable, not irritating, antiallergic.

The velcro fastening system allows an effective subsection.

PRECAUTIONS AND RECOMMENDATIONS

The use by more than a patient may provoke a cross-infection.

Do not use the product on injured skin.

Do not use the product if it is polluted, dirty or evidently deteriorated.

STORAGE AND SHELF-LIFE

Keep away from sunlight. Keep dry.

Shelf-life: 5 years.

PRODUCT DIMENSIONS

In order to choose the correct size, the cranial perimeter has to be taken into account, as well as, the ocular surface to protect:



REFERENCE	MODEL	CRANIAL PERIMETER	MASK HIGH
1029200	MEDIUM	36 - 40 cm	4 cm
1029220	LARGE	35 - 41 cm	6.5 cm
1029250	SMALL	28 - 35 cm	3.5 cm

CONFIGURATION			
REFERENCE	UNITS/BOX	BOX DIMMENSIONS (cm)	BOX WEIGHT (kg)
1029200	25	21x15x15	0.41
1029220	25	21x15x15	0.41
1029250	25	21x15x15	0.36

IN COMPLIANCE WITH:

- Directive 93/42/EEC of the Council, Directive 2007/47/EC of the European Parliament and of the Council and Regulation (EU) 2017/745 of the European Parliament and of the Council.
- Class I, non-sterile (according to Annex IX of Directive 93/42 and Annex VIII of Regulation 745/2017).
- Enterprise certified by ISO 13485 and ISO 9001.
- Medical Devices Manufacturer Operating License No.: 3689-PS.

